



**Borstklinieken: een pluspunt voor de
gezondheid van de vrouw?**

**Les cliniques du sein : une avancée
pour la santé de la femme ?**

5.12.2006

MWABe

Dr Fabienne Liebens



The Belgian Medical Women's Association



- 1989
- The vision and voice of women in medicine
- To advance women in medicine and improve women's health.

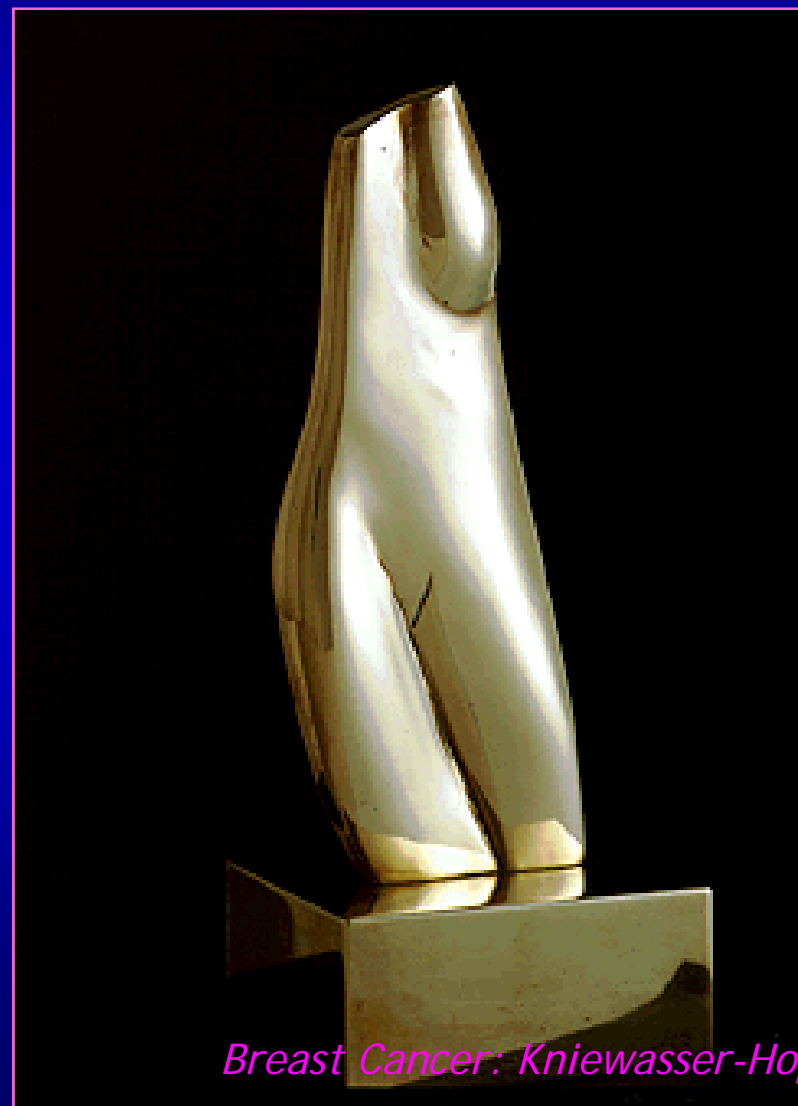
An illustration of anatomical lectures at the Women's Medical College of the New York Infirmary, Frank Leslie's Illustrated Newspaper, April 16, 1870.





Europa Donna Belgium

- To aim for best practice in all aspects of the breast cancer journey for every Belgian woman, no matter where she lives



Breast Cancer: Kniewasser-Hope



Donna.....

- 51 y
- Married, 2 children, work
- Change in her breast
- **Diagnosis?**



Donna.....

- Scientific literature
- Eurocare 3
- EUSOMA, EORTC

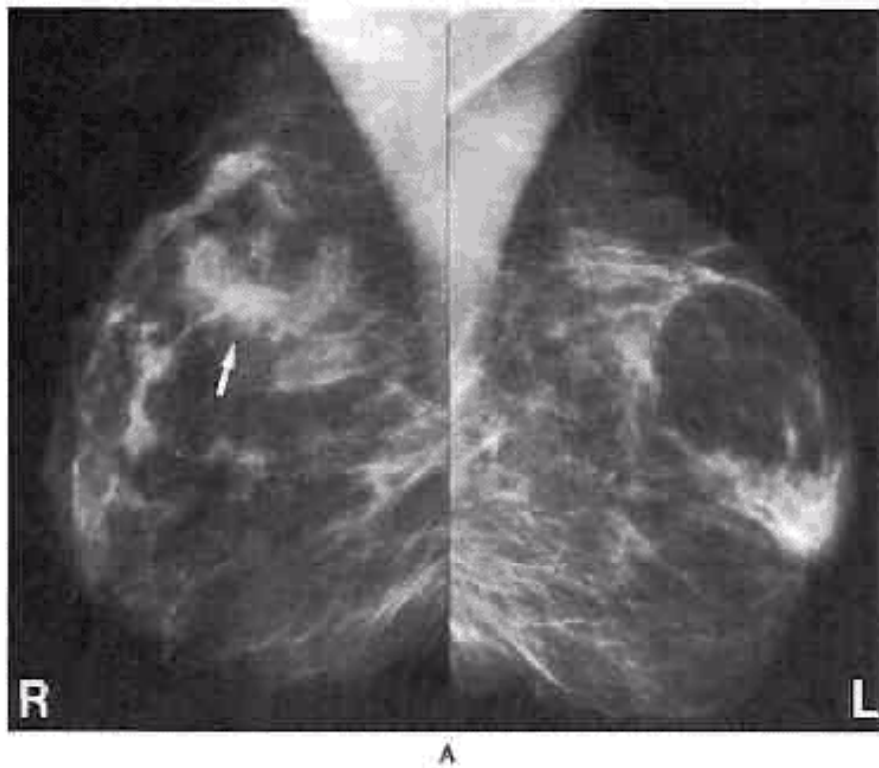
Belgium

- Registre National du Cancer ? 1998/2000
- RCM (FBCC)
- Report CM – 2006
- National survey on Belgian Psycho Oncology (Service Public Fédéral Santé Publique) - 2004



Radiologists experience

Quality of diagnosis



- 3/10 radiologists : normal,
- 7/10 : abnormality in the right breast (arrows),
 - probably benign 2/7
 - indeterminate 4/7
 - suggestive of cancer 1/7.

Radiologists Experience

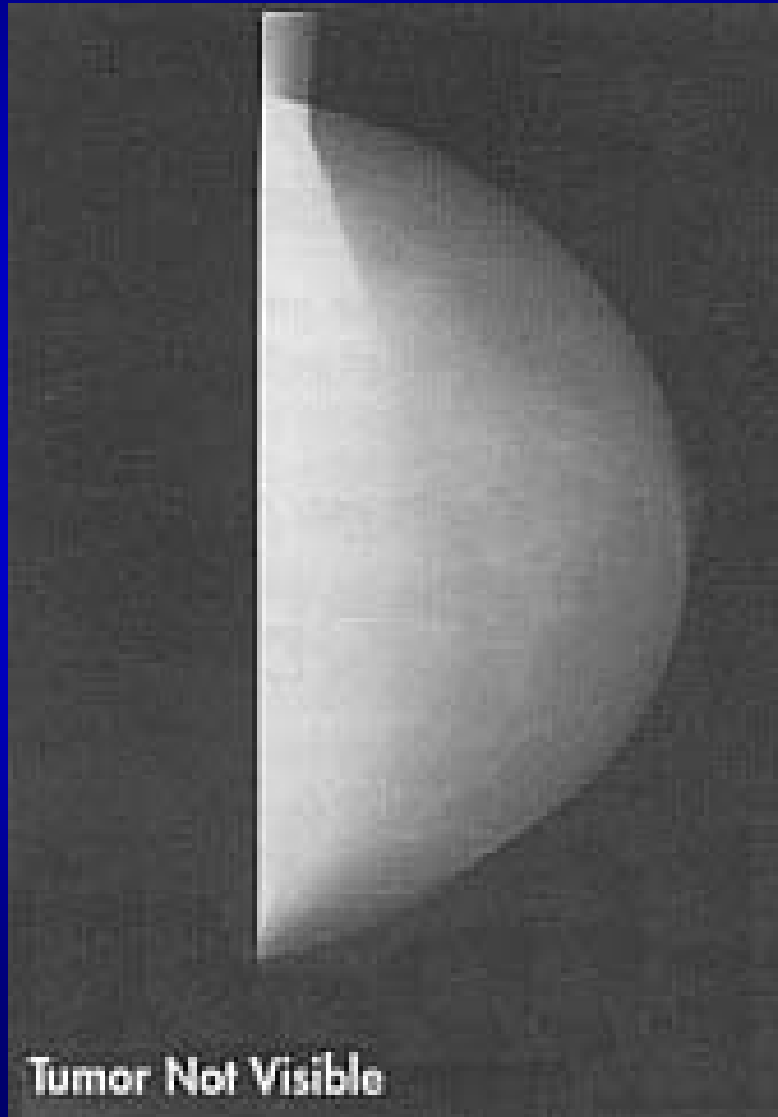
Quality of diagnosis

Radiologists interpretative performance related to

- Experience (number of studies interpreted during the past 1 or more years)
- Attendance at mammography teaching courses

Technical equipments

Quality of diagnosis



Pathologists experience

Quality of diagnosis



Pathologists Experience

Quality of diagnosis



- Complete correlation between the initial pathology report and second-opinion in only 69 (20%) of 346 breast cancer cases.
- Missing information accounted for a significant number of the changes
- Changes that altered the surgical procedure occurred in 7.8% of cases, and additional prognostic information was obtained in 40% of cases.



PERGAMON

European Journal of Cancer 37 (2001) 159–172

European
Journal of
Cancer

www.ejconline.com

Position Paper

Quality assurance in the diagnosis of breast disease

N.M. Perry on behalf of the EUSOMA Working Party*

- Modern diagnosis of breast disease/cancer is a **multidisciplinary** activity
- requiring **trained** and **experienced** professionals
- using **specialized** equipment
- with **up-to-date** sampling and other diagnostic techniques



Donna.....

- 51 y
- Married, 2 children, work
- BC diagnosed
- **Treatment?**

Gynaecologists, Surgeons

Quality of treatment

Table 1—Survival in women with breast cancer according to whether they were treated by surgeon with specialist interest

Detail	Surgeons with specialist interest	Surgeons with no specialist interest	All patients
No of women	918	2868	3786
Percentage (SE) surviving at 5 years	67% (1.6%)	58% (0.9%)	60% (0.8%)
Percentage (SE) surviving at 10 years	49% (1.9%)	41% (1.0%)	43% (0.9%)
Relative hazard ratio (95% confidence interval) adjusted for age, deprivation, and tumour size	0.83 (0.74 to 0.92)	1.0 (baseline)	
Relative hazard ratio (95% confidence interval) adjusted for age, deprivation, tumour size, and nodal involvement	0.84 (0.75 to 0.94)	1.0 (baseline)	

Belgium

Quality of treatment



- Great variability
 - Surgery
 - Chemotherapy according to BC stages
 - Neoadjuvant chemotherapy (3% vs 63% stage 2-4)
 - Radiotherapy

February 2006



Donna.....

- 51 y
- Married, 2 children, work
- BC diagnosed
- **Quality of life?**

Assessment of 38 types of difficulties

Belgian Cancer Patients' Needs Study

Psychosocial

Body image
Psychological distress
Cognitive functioning
Communication with relatives
Interaction with relatives
Anxiety in medical situations
Cancer-related worries
Interaction with children
At work concerns

Medical interaction

Obtaining information
Communication
Control of medical team

Marital

Communication with partner
Affection with partner
Interaction with partner
Overprotection by partner
Neglect of care by partner

Sexual

Sex interest
Sexual dysfunction

Physical

Mobility
Activities of daily living
Leisure
Weight loss
Difficulty working
Pain
Clothing

Miscellaneous

Pain in medical procedures
Weight gain
Diarrhea/Enuresis
Chemotherapy
Radiotherapy
Ostomy
Prosthesis
Compliance
Transport
Financial problems
Finding a job
Dating

2005- Courtesy of Darius Razavi and Isabelle Merckaert

Physicians' detection of patients' distress

	Distress		Intervention indicated	
	n	%	n	%
Low	169	49,3	34	20,1
Moderate	94	27,4	18	19,1
High	80	23,3	29	36,3

Courtesy of Darius Razavi and Isabelle Merckaert

The hard way to implementation

- Difficulties:
 - Multidisciplinary: who is responsible for care and budget?
 - “I can do it to”
 - “do not come into my wallet”
 - Why is breast cancer so special?
 - Minimal caseload not negotiable
 - Conservatism and fear of change:
 - “We are doing good”
 - Turn around way of working: not around the doctor and hospital, but around the patients problem
 - Change of culture and management

The hard way to implementation

- The advantages are:
 - Evident!
 - patients do better
 - patients are more satisfied
 - gain in time and money
 - less diagnostic procedures, less operations
 - less mutilation
 - more satisfaction from professionals



Conclusion

- ... « Don't shake me, I am filled with tears », warned the writer Henri Calet. Besides tears, or instead of tears, a group of determined women has decided to show they are filled with ideas and stamina as they challenge breast cancer, a drama that puts their life in the balance. With or without tears, their move is bound to shake the Medical World. ...

Pascale Gruber, september 2003,
...about Europa Donna Belgium